



USA - INSTALLATION INSTRUCTION FOR DROP LEG TRAILER JACKS

"TO BE USED WITH 2", 3", 4", AND 5" TALL FRAMES"
"3" MAX FRAME WIDTH"

WARNING!

Failure to follow these warnings and instructions may result in property damage, serious bodily injury, and/or death.

INSTALLATION

1. Before mounting jack make sure there will be no interference from the tow vehicle, tongue, ground, and any other mounted accessories while stationary or in motion.
2. After installation check for interference again. Make adjustments as needed.

BOLT ON

1. Place the jack on the frame as close to the coupler as possible.
2. Insert the 4 bolts through the mounting brackets. The upper bolts should rest on top of the tongue (See Figure 2). The lower bolts should be less than 1/16" from the bottom of the tongue.
3. Secure with locknuts and torque to 25 ft-lbs.

WELD ON

1. All welding must be performed by an AWS certified welder.
2. Place the jack on the frame as close to the coupler as possible.
3. Weld both sides of the jack using a 3/16" fillet weld (See Figure 3).

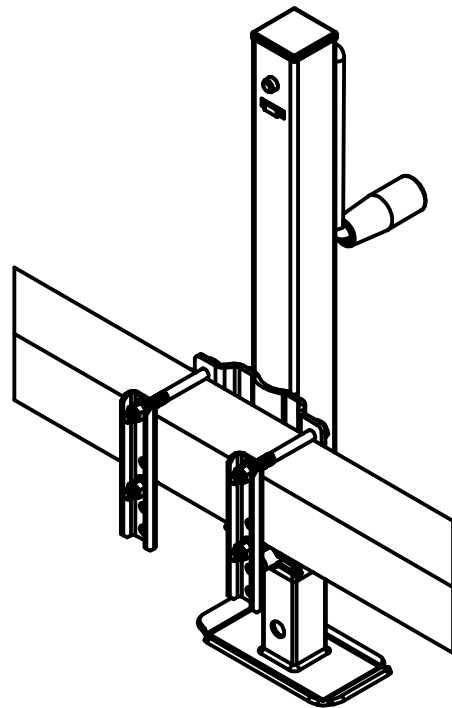


FIGURE 2: BOLT ON JACK

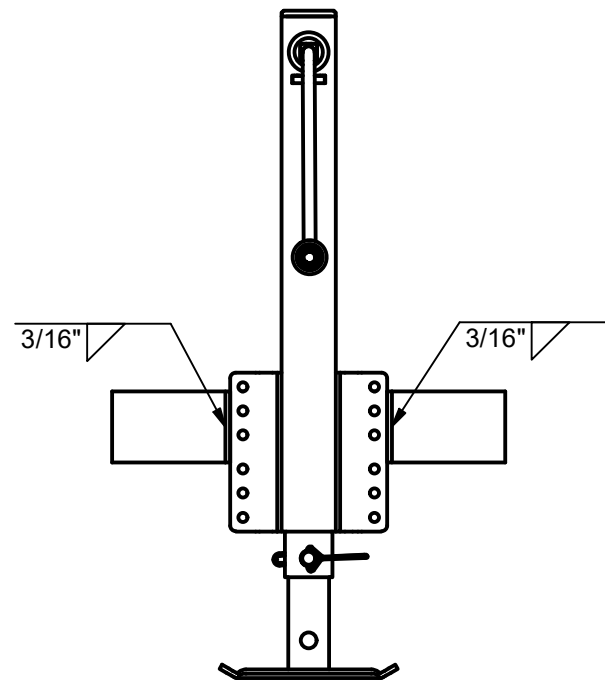


FIGURE 3: WELD ON JACK

OPERATION

1. Start by removing the safety pin and lowering the Drop Leg as close to the ground as possible (See Figure 4).
2. Align closest hole position, then install and secure safety pin with its clip (See Figure 5).
3. Raise the trailer by cranking the handle clockwise and lower by cranking counterclockwise. When the jack reaches the end of its travel, STOP when additional resistance is felt. Failure to do so will result in mechanical damage.
4. Before towing the trailer, be certain the jack is fully raised, and Drop Leg is in stowed position to give maximum road clearance (See Figure 6).

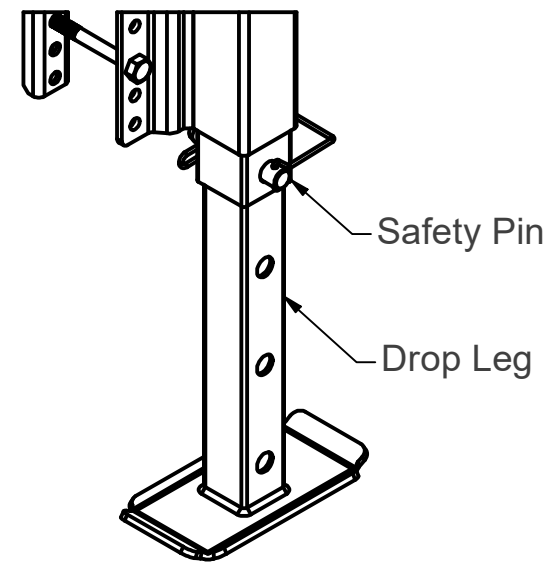


FIGURE 4: DROP LEG LOWERED



FIGURE 5:
INSTALLED & SECURED SAFETY PIN

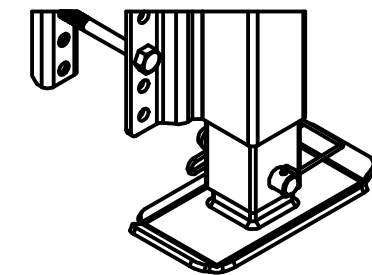


FIGURE 6:
DROP LEG IN STOWED POSITION

CAUTION!
LOADS IN EXCESS OF LABELED CAPACITY
WILL CAUSE ACCELERATED WEAR ON THE
JACK AND POSSIBLE FAILURE

CAUTION!
AVOID CRANKING THE JACK TO UNNECESSARY HEIGHT



USA - INSTALLATION INSTRUCTION FOR DROP LEG TRAILER JACKS

"TO BE USED WITH 2", 3", 4", AND 5" TALL FRAMES"
"3" MAX FRAME WIDTH"

MAINTENANCE

The internal gears and bushings must be kept lubricated. The gears can be accessed by removing the end cap on top of the jack. Only remove the end cap when weight is off of the jack. Apply a small amount of automotive grease to the internal gears and rotate the jack handle to distribute the grease evenly. Use a lightweight oil to lubricate the handle unit at both sides of the tube. Grease can be applied to the trust bearing with a standard grease gun on the lubrication point on the side of the jack near the crank.

Replacement Parts List			
ITEM	QTY	PART NUMBER	DESCRIPTION
1	1	ACC-02-0026G	SAFETY PIN - 16 [.63] OD - GALV
2	1	ACC-02-0031N	HANDLE KIT - BLACK - NATURAL
3	1	JKS-03-0005G	MOUNTING KIT - BRACKETS - GALV

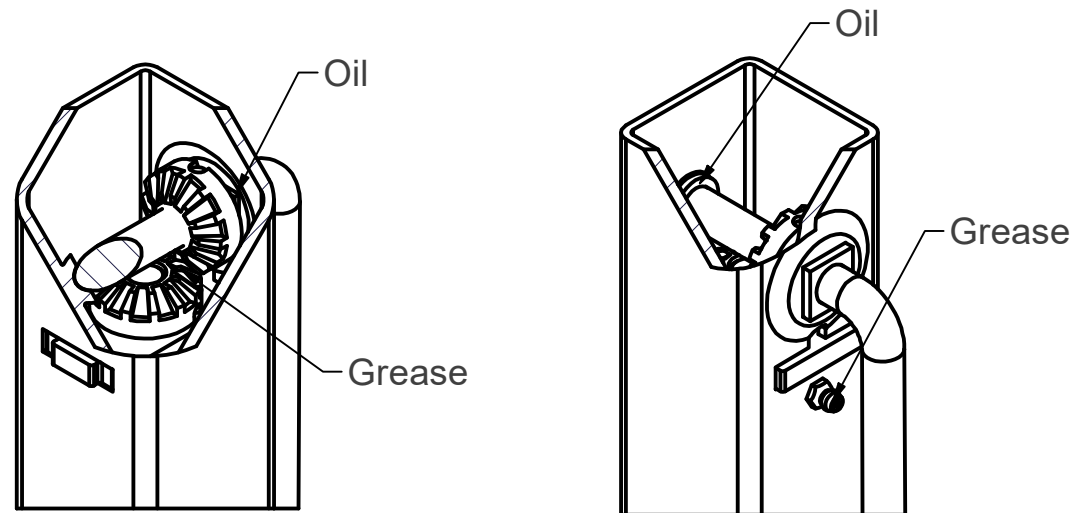


FIGURE 7:
INTERNAL GEARS

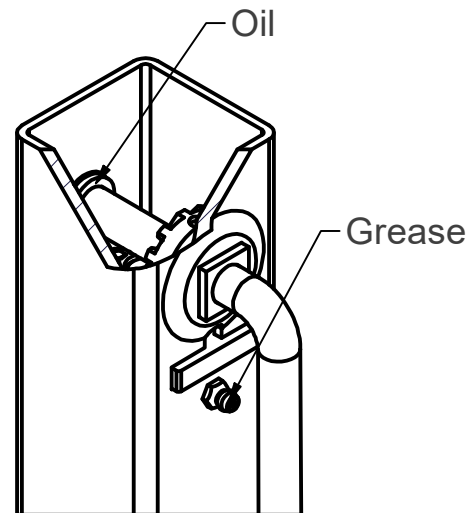
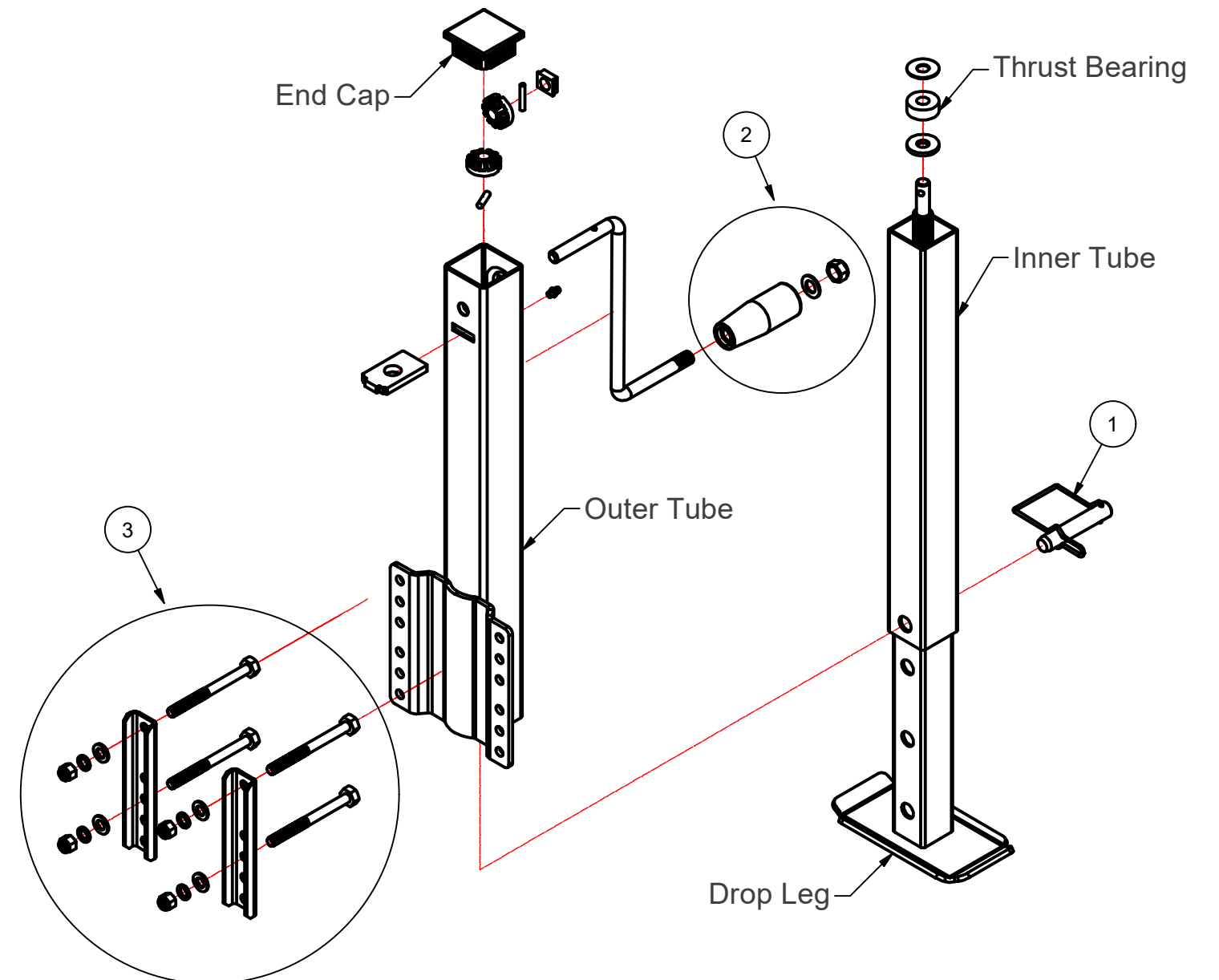


FIGURE 8:
GREASE & OIL LOCATIONS



LIMITED WARRANTY

For information regarding our limited warranty visit our website "www.themehergroup.com."

Meher USA Inc.

USA Head Office
5400 Newport Drive, Suite 21, Rolling Meadows, IL 60008, USA
Phone: +1 773 943 9387 Email: ussales@themehergroup.com

Meher Group Global Head Office
11 National Drive, Hallam, VIC 3803, Australia
Phone: +61 3 8795 7088 Email: sales@themehergroup.com

www.themehergroup.com